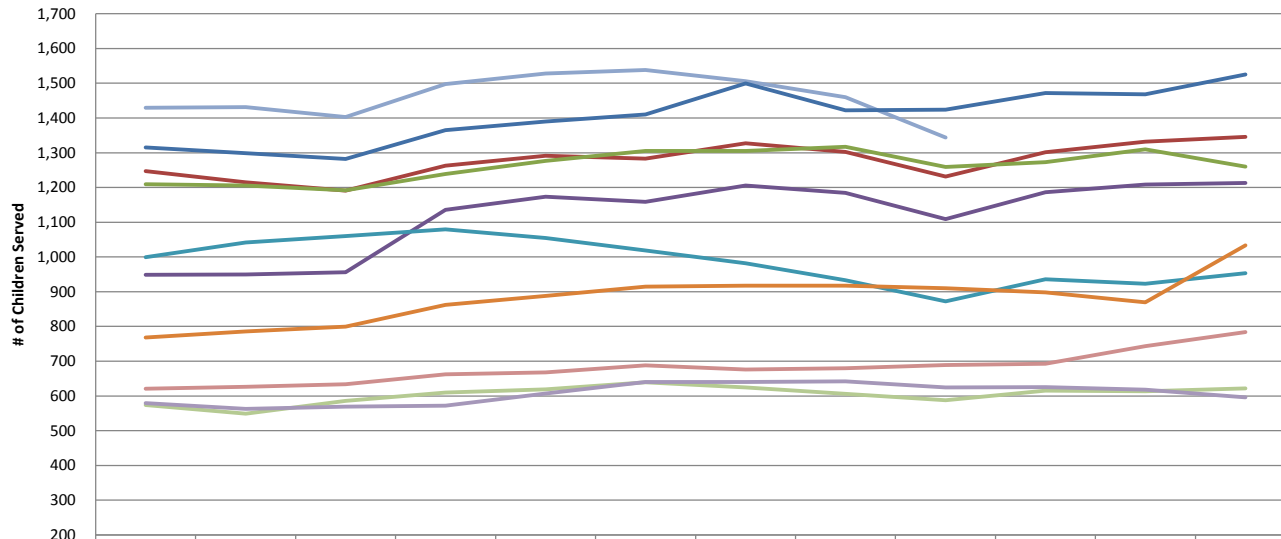


Child Find Trends
Total Number* of Birth through One on Given Date

| Year | Jan 1 | Feb 1 | Mar 1 | Apr 1 | May 1 | Jun 1 | Jul 1 | Aug 1 | Sep 1 | Oct 1 | Nov 1 | Dec 1 |
|------|-------|-------|-------|-------|-------|-------|-------|-------|-------|-------|-------|-------|
| 2017 | 1,429 | 1,431 | 1,403 | 1,498 | 1,528 | 1,538 | 1,506 | 1,460 | 1,344 | | | |
| 2016 | 1,315 | 1,299 | 1,282 | 1,365 | 1,390 | 1,410 | 1,499 | 1,422 | 1,424 | 1,472 | 1,468 | 1,525 |
| 2015 | 1,247 | 1,215 | 1,191 | 1,263 | 1,291 | 1,283 | 1,327 | 1,302 | 1,231 | 1,301 | 1,332 | 1,346 |
| 2014 | 1,209 | 1,206 | 1,192 | 1,239 | 1,277 | 1,305 | 1,305 | 1,317 | 1,259 | 1,273 | 1,310 | 1,260 |
| 2013 | 949 | 950 | 956 | 1,136 | 1,173 | 1,159 | 1,206 | 1,184 | 1,109 | 1,186 | 1,208 | 1,213 |
| 2012 | 999 | 1,042 | 1,060 | 1,079 | 1,055 | 1,019 | 982 | 933 | 872 | 936 | 923 | 953 |
| 2011 | 768 | 786 | 799 | 862 | 888 | 915 | 917 | 917 | 910 | 898 | 869 | 1,033 |
| 2010 | 621 | 626 | 634 | 662 | 668 | 688 | 676 | 680 | 689 | 693 | 743 | 784 |
| 2009 | 574 | 549 | 586 | 610 | 619 | 639 | 624 | 606 | 588 | 615 | 613 | 622 |
| 2008 | 579 | 563 | 569 | 572 | 607 | 640 | 640 | 642 | 624 | 625 | 618 | 596 |

| |
|--|
| |
| |
| |
| |
| |
| |
| |
| |
| |
| |
| |
| |

Birth Through One

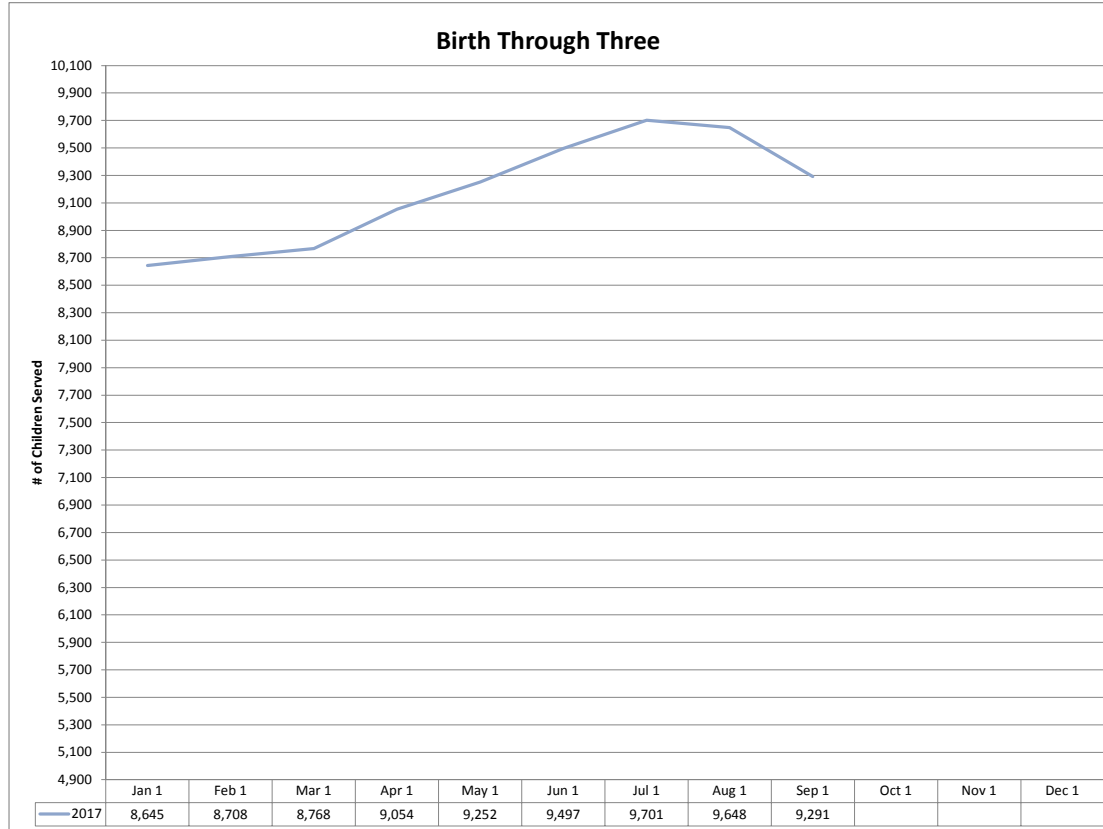


| | Jan 1 | Feb 1 | Mar 1 | Apr 1 | May 1 | Jun 1 | Jul 1 | Aug 1 | Sep 1 | Oct 1 | Nov 1 | Dec 1 |
|-------|-------|-------|-------|-------|-------|-------|-------|-------|-------|-------|-------|-------|
| —2017 | 1,429 | 1,431 | 1,403 | 1,498 | 1,528 | 1,538 | 1,506 | 1,460 | 1,344 | | | |
| —2016 | 1,315 | 1,299 | 1,282 | 1,365 | 1,390 | 1,410 | 1,499 | 1,422 | 1,424 | 1,472 | 1,468 | 1,525 |
| —2015 | 1,247 | 1,215 | 1,191 | 1,263 | 1,291 | 1,283 | 1,327 | 1,302 | 1,231 | 1,301 | 1,332 | 1,346 |
| —2014 | 1,209 | 1,206 | 1,192 | 1,239 | 1,277 | 1,305 | 1,305 | 1,317 | 1,259 | 1,273 | 1,310 | 1,260 |
| —2013 | 949 | 950 | 956 | 1,136 | 1,173 | 1,159 | 1,206 | 1,184 | 1,109 | 1,186 | 1,208 | 1,213 |
| —2012 | 999 | 1,042 | 1,060 | 1,079 | 1,055 | 1,019 | 982 | 933 | 872 | 936 | 923 | 953 |
| —2011 | 768 | 786 | 799 | 862 | 888 | 915 | 917 | 917 | 910 | 898 | 869 | 1,033 |
| —2010 | 621 | 626 | 634 | 662 | 668 | 688 | 676 | 680 | 689 | 693 | 743 | 784 |
| —2009 | 574 | 549 | 586 | 610 | 619 | 639 | 624 | 606 | 588 | 615 | 613 | 622 |
| —2008 | 579 | 563 | 569 | 572 | 607 | 640 | 640 | 642 | 624 | 625 | 618 | 596 |

Child Find Trends
Total Number* of Birth through Three on Given Date

| Year | Jan 1 | Feb 1 | Mar 1 | Apr 1 | May 1 | Jun 1 | Jul 1 | Aug 1 | Sep 1 | Oct 1 | Nov 1 | Dec 1 |
|------|-------|-------|-------|-------|-------|-------|-------|-------|-------|-------|-------|-------|
| 2017 | 8,645 | 8,708 | 8,768 | 9,054 | 9,252 | 9,497 | 9,701 | 9,648 | 9,291 | | | |
| 2016 | 8,301 | 8,320 | 8,301 | 8,585 | 8,720 | 8,883 | 9,078 | 9,023 | 8,446 | 8,278 | 8,479 | 8,758 |
| 2015 | 7,907 | 7,854 | 7,912 | 8,048 | 8,214 | 8,294 | 8,443 | 8,486 | 8,337 | 7,841 | 8,003 | 8,279 |
| 2014 | 7,667 | 7,709 | 7,787 | 7,804 | 8,093 | 8,247 | 8,380 | 8,467 | 7,971 | 7,681 | 7,701 | 7,908 |
| 2013 | 7,197 | 7,138 | 7,247 | 7,280 | 7,431 | 7,853 | 7,847 | 7,904 | 7,442 | 7,281 | 7,463 | 7,642 |
| 2012 | 7,382 | 7,470 | 7,628 | 7,808 | 7,919 | 7,954 | 7,987 | 7,933 | 7,401 | 7,106 | 7,143 | 7,284 |
| 2011 | 6,289 | 6,393 | 6,498 | 6,788 | 7,031 | 7,289 | 7,470 | 7,660 | 7,297 | 7,009 | 7,134 | 7,362 |
| 2010 | 5,362 | 5,355 | 5,427 | 5,616 | 5,793 | 6,019 | 6,231 | 6,354 | 5,980 | 5,790 | 5,971 | 6,294 |
| 2009 | 5,170 | 5,100 | 5,221 | 5,348 | 5,539 | 5,703 | 5,781 | 5,911 | 5,511 | 5,167 | 5,187 | 5,349 |
| 2008 | 5,014 | 5,059 | 5,156 | 5,280 | 5,481 | 5,629 | 5,724 | 5,817 | 5,285 | 5,097 | 5,111 | 5,148 |

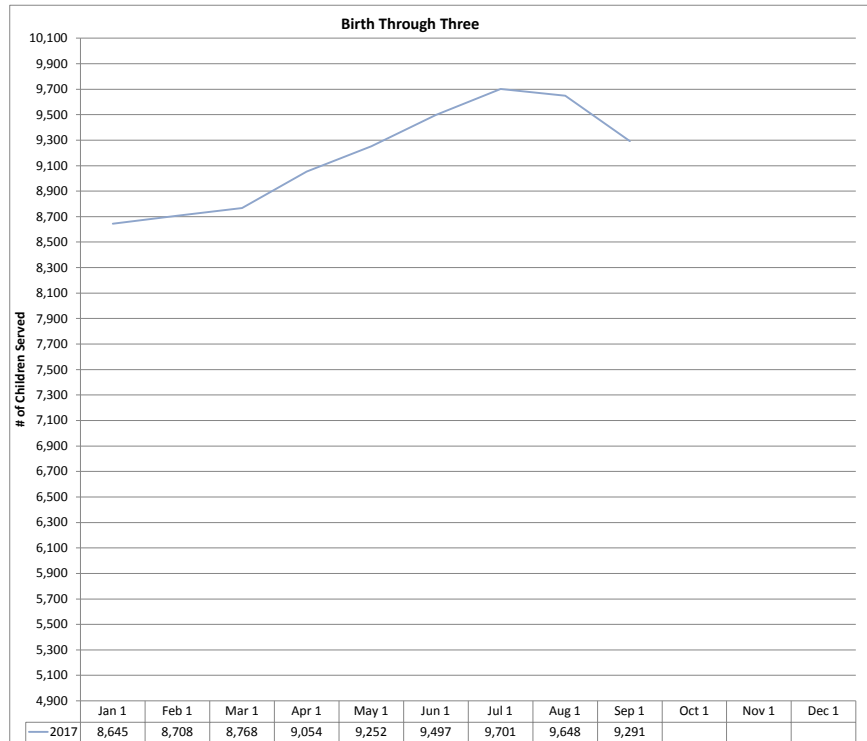
* The figures in the table above do not include children under 3 served in Part B.



Child Find Trends
Total Number* of Birth through Three on Given Date

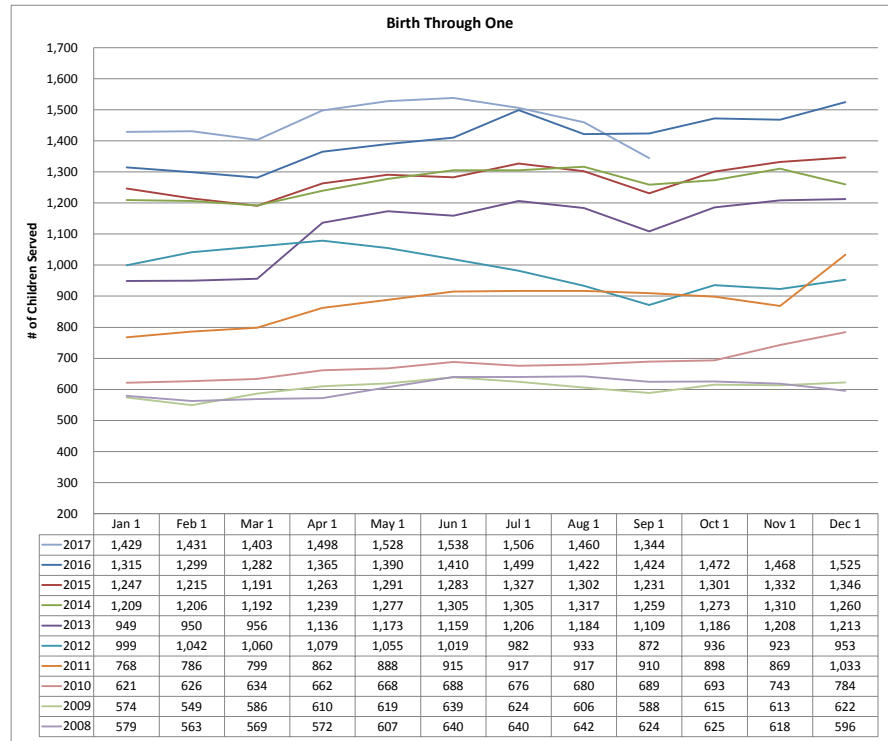
| Year | Jan 1 | Feb 1 | Mar 1 | Apr 1 | May 1 | Jun 1 | Jul 1 | Aug 1 | Sep 1 | Oct 1 | Nov 1 | Dec 1 |
|------|-------|-------|-------|-------|-------|-------|-------|-------|-------|-------|-------|-------|
| 2017 | 8,645 | 8,708 | 8,768 | 9,054 | 9,252 | 9,497 | 9,701 | 9,648 | 9,291 | | | |
| 2016 | 8,301 | 8,320 | 8,301 | 8,585 | 8,720 | 8,883 | 9,078 | 9,023 | 8,446 | 8,278 | 8,479 | 8,758 |
| 2015 | 7,907 | 7,854 | 7,912 | 8,048 | 8,214 | 8,294 | 8,443 | 8,486 | 8,337 | 7,841 | 8,003 | 8,279 |
| 2014 | 7,667 | 7,709 | 7,787 | 7,804 | 8,093 | 8,247 | 8,380 | 8,467 | 7,971 | 7,681 | 7,701 | 7,908 |
| 2013 | 7,197 | 7,138 | 7,247 | 7,280 | 7,431 | 7,853 | 7,847 | 7,904 | 7,442 | 7,281 | 7,463 | 7,642 |
| 2012 | 7,382 | 7,470 | 7,628 | 7,808 | 7,919 | 7,954 | 7,987 | 7,933 | 7,401 | 7,106 | 7,143 | 7,284 |
| 2011 | 6,289 | 6,393 | 6,498 | 6,788 | 7,031 | 7,289 | 7,470 | 7,660 | 7,297 | 7,009 | 7,134 | 7,362 |
| 2010 | 5,362 | 5,355 | 5,427 | 5,616 | 5,793 | 6,019 | 6,231 | 6,354 | 5,980 | 5,790 | 5,971 | 6,294 |
| 2009 | 5,170 | 5,100 | 5,221 | 5,348 | 5,539 | 5,703 | 5,781 | 5,911 | 5,511 | 5,167 | 5,187 | 5,349 |
| 2008 | 5,014 | 5,059 | 5,156 | 5,280 | 5,481 | 5,629 | 5,724 | 5,817 | 5,285 | 5,097 | 5,111 | 5,148 |

* The figures in the table above do not include children under 3 served in Part B.



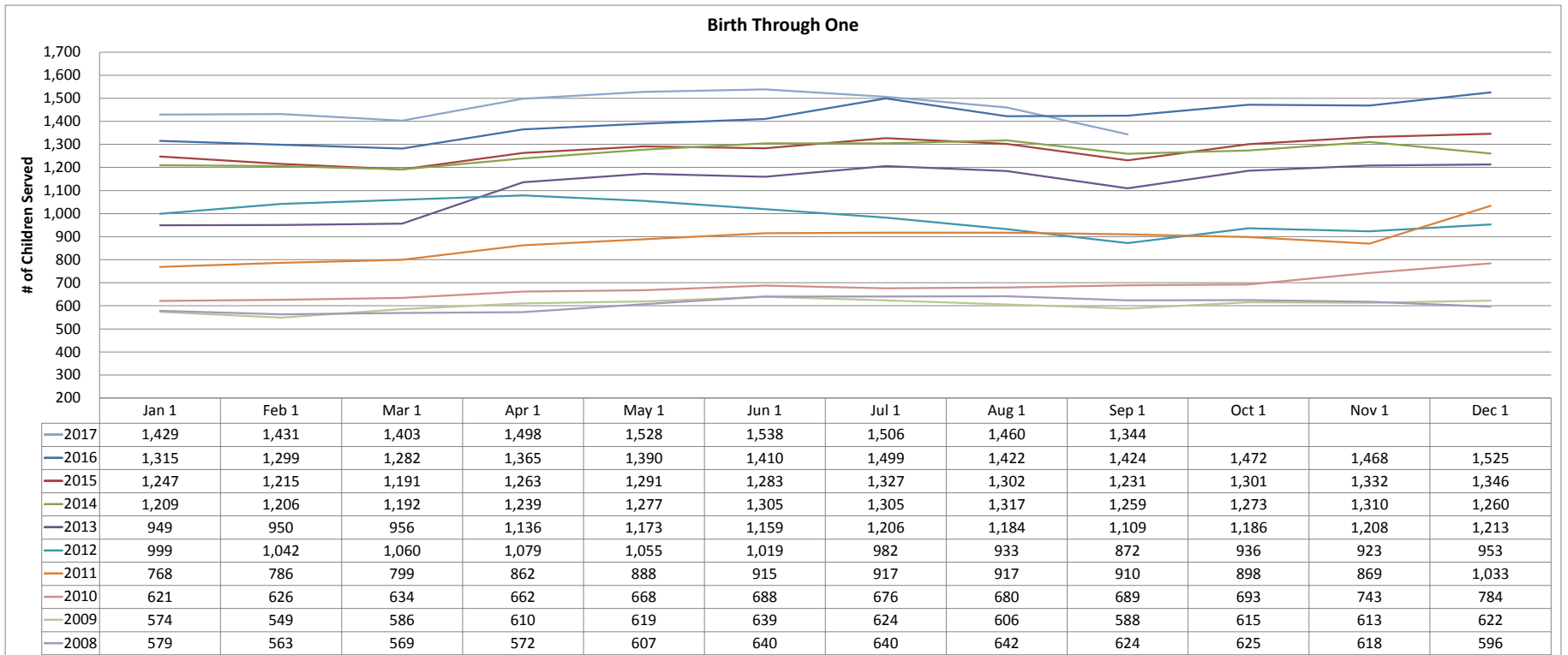
Child Find Trends
Total Number* of Birth through One on Given Date

| Year | Jan 1 | Feb 1 | Mar 1 | Apr 1 | May 1 | Jun 1 | Jul 1 | Aug 1 | Sep 1 | Oct 1 | Nov 1 | Dec 1 |
|------|-------|-------|-------|-------|-------|-------|-------|-------|-------|-------|-------|-------|
| 2017 | 1,429 | 1,431 | 1,403 | 1,498 | 1,528 | 1,538 | 1,506 | 1,460 | 1,344 | | | |
| 2016 | 1,315 | 1,299 | 1,282 | 1,365 | 1,390 | 1,410 | 1,499 | 1,422 | 1,424 | 1,472 | 1,468 | 1,525 |
| 2015 | 1,247 | 1,215 | 1,191 | 1,263 | 1,291 | 1,283 | 1,327 | 1,302 | 1,231 | 1,301 | 1,332 | 1,346 |
| 2014 | 1,209 | 1,206 | 1,192 | 1,239 | 1,277 | 1,305 | 1,305 | 1,317 | 1,259 | 1,273 | 1,310 | 1,260 |
| 2013 | 949 | 950 | 956 | 1,136 | 1,173 | 1,159 | 1,206 | 1,184 | 1,109 | 1,186 | 1,208 | 1,213 |
| 2012 | 999 | 1,042 | 1,060 | 1,079 | 1,055 | 1,019 | 982 | 933 | 872 | 936 | 923 | 953 |
| 2011 | 768 | 786 | 799 | 862 | 888 | 915 | 917 | 917 | 910 | 898 | 869 | 1,033 |
| 2010 | 621 | 626 | 634 | 662 | 668 | 688 | 676 | 680 | 689 | 693 | 743 | 784 |
| 2009 | 574 | 549 | 586 | 610 | 619 | 639 | 624 | 606 | 588 | 615 | 613 | 622 |
| 2008 | 579 | 563 | 569 | 572 | 607 | 640 | 640 | 642 | 624 | 625 | 618 | 596 |



Child Find Trends
Total Number* of Birth through One on Given Date

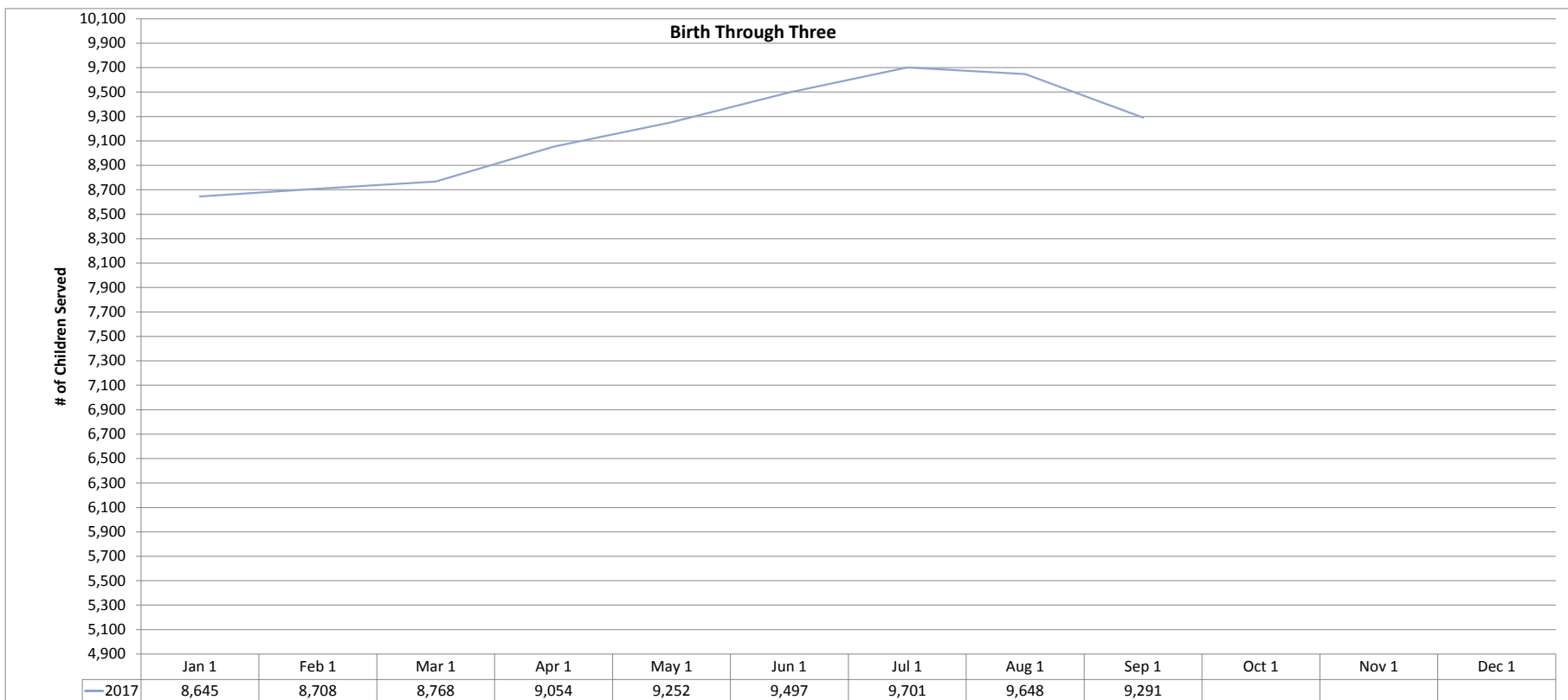
| Year | Jan 1 | Feb 1 | Mar 1 | Apr 1 | May 1 | Jun 1 | Jul 1 | Aug 1 | Sep 1 | Oct 1 | Nov 1 | Dec 1 |
|------|-------|-------|-------|-------|-------|-------|-------|-------|-------|-------|-------|-------|
| 2017 | 1,429 | 1,431 | 1,403 | 1,498 | 1,528 | 1,538 | 1,506 | 1,460 | 1,344 | | | |
| 2016 | 1,315 | 1,299 | 1,282 | 1,365 | 1,390 | 1,410 | 1,499 | 1,422 | 1,424 | 1,472 | 1,468 | 1,525 |
| 2015 | 1,247 | 1,215 | 1,191 | 1,263 | 1,291 | 1,283 | 1,327 | 1,302 | 1,231 | 1,301 | 1,332 | 1,346 |
| 2014 | 1,209 | 1,206 | 1,192 | 1,239 | 1,277 | 1,305 | 1,305 | 1,317 | 1,259 | 1,273 | 1,310 | 1,260 |
| 2013 | 949 | 950 | 956 | 1,136 | 1,173 | 1,159 | 1,206 | 1,184 | 1,109 | 1,186 | 1,208 | 1,213 |
| 2012 | 999 | 1,042 | 1,060 | 1,079 | 1,055 | 1,019 | 982 | 933 | 872 | 936 | 923 | 953 |
| 2011 | 768 | 786 | 799 | 862 | 888 | 915 | 917 | 917 | 910 | 898 | 869 | 1,033 |
| 2010 | 621 | 626 | 634 | 662 | 668 | 688 | 676 | 680 | 689 | 693 | 743 | 784 |
| 2009 | 574 | 549 | 586 | 610 | 619 | 639 | 624 | 606 | 588 | 615 | 613 | 622 |
| 2008 | 579 | 563 | 569 | 572 | 607 | 640 | 640 | 642 | 624 | 625 | 618 | 596 |



Child Find Trends
Total Number* of Birth through Three on Given Date

| Year | Jan 1 | Feb 1 | Mar 1 | Apr 1 | May 1 | Jun 1 | Jul 1 | Aug 1 | Sep 1 | Oct 1 | Nov 1 | Dec 1 |
|-------------|-------|-------|-------|-------|-------|-------|-------|-------|-------|-------|-------|-------|
| 2017 | 8,645 | 8,708 | 8,768 | 9,054 | 9,252 | 9,497 | 9,701 | 9,648 | 9,291 | | | |
| 2016 | 8,301 | 8,320 | 8,301 | 8,585 | 8,720 | 8,883 | 9,078 | 9,023 | 8,446 | 8,278 | 8,479 | 8,758 |
| 2015 | 7,907 | 7,854 | 7,912 | 8,048 | 8,214 | 8,294 | 8,443 | 8,486 | 8,337 | 7,841 | 8,003 | 8,279 |
| 2014 | 7,667 | 7,709 | 7,787 | 7,804 | 8,093 | 8,247 | 8,380 | 8,467 | 7,971 | 7,681 | 7,701 | 7,908 |
| 2013 | 7,197 | 7,138 | 7,247 | 7,280 | 7,431 | 7,853 | 7,847 | 7,904 | 7,442 | 7,281 | 7,463 | 7,642 |
| 2012 | 7,382 | 7,470 | 7,628 | 7,808 | 7,919 | 7,954 | 7,987 | 7,933 | 7,401 | 7,106 | 7,143 | 7,284 |
| 2011 | 6,289 | 6,393 | 6,498 | 6,788 | 7,031 | 7,289 | 7,470 | 7,660 | 7,297 | 7,009 | 7,134 | 7,362 |
| 2010 | 5,362 | 5,355 | 5,427 | 5,616 | 5,793 | 6,019 | 6,231 | 6,354 | 5,980 | 5,790 | 5,971 | 6,294 |
| 2009 | 5,170 | 5,100 | 5,221 | 5,348 | 5,539 | 5,703 | 5,781 | 5,911 | 5,511 | 5,167 | 5,187 | 5,349 |
| 2008 | 5,014 | 5,059 | 5,156 | 5,280 | 5,481 | 5,629 | 5,724 | 5,817 | 5,285 | 5,097 | 5,111 | 5,148 |

* The figures in the table above do not include children under 3 served in Part B.



Child Find Trends
Total Number* of Birth through Three on Given Date

| Year | Jan 1 | Feb 1 | Mar 1 | Apr 1 | May 1 | Jun 1 | Jul 1 | Aug 1 | Sep 1 | Oct 1 | Nov 1 | Dec 1 |
|------|-------|-------|-------|-------|-------|-------|-------|-------|-------|-------|-------|-------|
| 2017 | 8,645 | 8,708 | 8,768 | 9,054 | 9,252 | 9,497 | 9,701 | 9,648 | 9,291 | | | |
| 2016 | 8,301 | 8,320 | 8,301 | 8,585 | 8,720 | 8,883 | 9,078 | 9,023 | 8,446 | 8,278 | 8,479 | 8,758 |
| 2015 | 7,907 | 7,854 | 7,912 | 8,048 | 8,214 | 8,294 | 8,443 | 8,486 | 8,337 | 7,841 | 8,003 | 8,279 |
| 2014 | 7,667 | 7,709 | 7,787 | 7,804 | 8,093 | 8,247 | 8,380 | 8,467 | 7,971 | 7,681 | 7,701 | 7,908 |
| 2013 | 7,197 | 7,138 | 7,247 | 7,280 | 7,431 | 7,853 | 7,847 | 7,904 | 7,442 | 7,281 | 7,463 | 7,642 |
| 2012 | 7,382 | 7,470 | 7,628 | 7,808 | 7,919 | 7,954 | 7,987 | 7,933 | 7,401 | 7,106 | 7,143 | 7,284 |
| 2011 | 6,289 | 6,393 | 6,498 | 6,788 | 7,031 | 7,289 | 7,470 | 7,660 | 7,297 | 7,009 | 7,134 | 7,362 |
| 2010 | 5,362 | 5,355 | 5,427 | 5,616 | 5,793 | 6,019 | 6,231 | 6,354 | 5,980 | 5,790 | 5,971 | 6,294 |
| 2009 | 5,170 | 5,100 | 5,221 | 5,348 | 5,539 | 5,703 | 5,781 | 5,911 | 5,511 | 5,167 | 5,187 | 5,349 |
| 2008 | 5,014 | 5,059 | 5,156 | 5,280 | 5,481 | 5,629 | 5,724 | 5,817 | 5,285 | 5,097 | 5,111 | 5,148 |

* The figures in the table above do not include children under 3 served in Part B.

