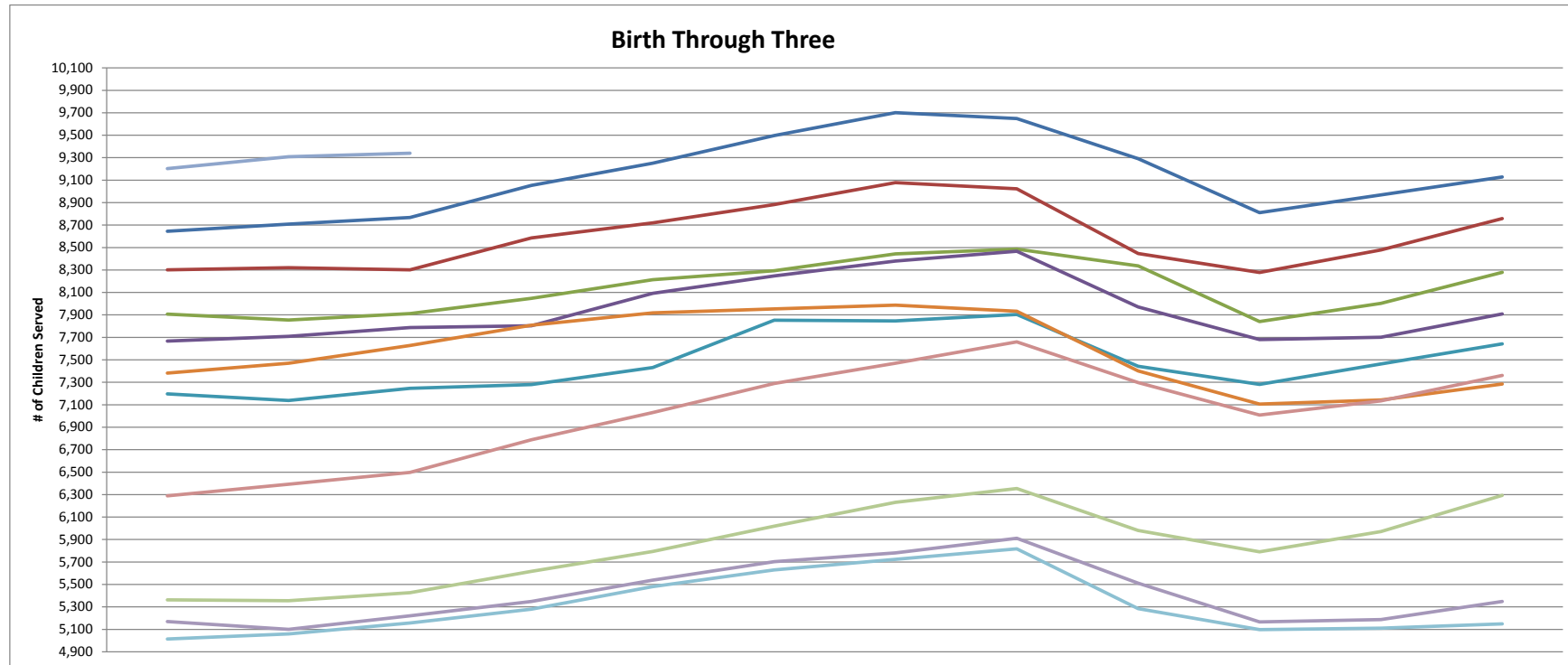


Child Find Trends Total Number* of Birth through Three on Given Date

Year	Jan 1	Feb 1	Mar 1	Apr 1	May 1	Jun 1	Jul 1	Aug 1	Sep 1	Oct 1	Nov 1	Dec 1
2018	9,203	9,309	9,340									
2017	8,645	8,708	8,768	9,054	9,252	9,497	9,701	9,648	9,291	8,811	8,968	9,128
2016	8,301	8,320	8,301	8,585	8,720	8,883	9,078	9,023	8,446	8,278	8,479	8,758
2015	7,907	7,854	7,912	8,048	8,214	8,294	8,443	8,486	8,337	7,841	8,003	8,279
2014	7,667	7,709	7,787	7,804	8,093	8,247	8,380	8,467	7,971	7,681	7,701	7,908
2013	7,197	7,138	7,247	7,280	7,431	7,853	7,847	7,904	7,442	7,281	7,463	7,642
2012	7,382	7,470	7,628	7,808	7,919	7,954	7,987	7,933	7,401	7,106	7,143	7,284
2011	6,289	6,393	6,498	6,788	7,031	7,289	7,470	7,660	7,297	7,009	7,134	7,362
2010	5,362	5,355	5,427	5,616	5,793	6,019	6,231	6,354	5,980	5,790	5,971	6,294
2009	5,170	5,100	5,221	5,348	5,539	5,703	5,781	5,911	5,511	5,167	5,187	5,349
2008	5,014	5,059	5,156	5,280	5,481	5,629	5,724	5,817	5,285	5,097	5,111	5,148

* The figures in the table above do not include children under 3 served in Part B.



Child Find Trends

Total Number* of Birth through One on Given Date

Year	Jan 1	Feb 1	Mar 1	Apr 1	May 1	Jun 1	Jul 1	Aug 1	Sep 1	Oct 1	Nov 1	Dec 1
2018	1,421	1,441	1,466									
2017	1,429	1,431	1,403	1,498	1,528	1,538	1,506	1,460	1,344	1,395	1,460	1,492
2016	1,315	1,299	1,282	1,365	1,390	1,410	1,499	1,422	1,424	1,472	1,468	1,525
2015	1,247	1,215	1,191	1,263	1,291	1,283	1,327	1,302	1,231	1,301	1,332	1,346
2014	1,209	1,206	1,192	1,239	1,277	1,305	1,305	1,317	1,259	1,273	1,310	1,260
2013	949	950	956	1,136	1,173	1,159	1,206	1,184	1,109	1,186	1,208	1,213
2012	999	1,042	1,060	1,079	1,055	1,019	982	933	872	936	923	953
2011	768	786	799	862	888	915	917	917	910	898	869	1,033
2010	621	626	634	662	668	688	676	680	689	693	743	784
2009	574	549	586	610	619	639	624	606	588	615	613	622
2008	579	563	569	572	607	640	640	642	624	625	618	596

